



PEDIATRIC AND ADOLESCENT GYNECOLOGY SOCIETY OF THE PHILIPPINES (PAGSPHIL)

WORLD CONGRESS OF PEDIATRIC AND ADOLESCENT GYNECOLOGY

METRO MANILA, PHILIPPINES



WHY PAGSPHIL?



A PROVEN VISION: AS THE RECOGNIZED AUTHORITY IN PEDIATRIC AND ADOLESCENT GYNECOLOGY, WE BRING A LEGACY OF LEADERSHIP AND SPECIALIZED EXPERTISE IN ASIA AND THE GLOBAL STAGE.

MISSION-DRIVEN EXCELLENCE: WE ARE STEADFAST IN OUR MISSION TO SET THE GOLD STANDARD IN QUALITY HEALTHCARE SERVICES, ADVANCED TRAINING, AND TRANSFORMATIVE RESEARCH IN PAG.

SMALL SOCIETY, GLOBAL IMPACT: DESPITE OUR INTIMATE MEMBERSHIP, OUR SOCIETY IS FUELED BY AN OUTSIZED COMMITMENT TO DELIVERING WORLD-CLASS CLINICAL SERVICE TO THE YOUTH.

THE SPIRIT OF BAYANIHAN: DELEGATES WILL EXPERIENCE A SYNERGY OF SOPHISTICATED ACADEMIC RIGOR AND THE LEGENDARY WARMTH OF FILIPINO HOSPITALITY.

A HUB FOR INNOVATION: BY HOSTING IN THE PHILIPPINES, WE PROVIDE AN AGILE, HIGHLY FOCUSED ENVIRONMENT DEDICATED TO ELEVATING THE FUTURE OF PAG WORLDWIDE.



CULTIVATING CONTINUITY: ADVANCING IN PEDIATRIC AND ADOLESCENT GYNECOLOGY FOR A CHANGING FUTURE



Preventive Care
Excellence



Hormonal Health
Solutions



Global Gaps
in PAG Care



Infancy

Early Guidance



Childhood

Growth & Education



Adolescence

Puberty & Counseling



Transition

Bridging to Adult Care

GLOBAL
CONNECTION
& ADULTHOOD



Adulthood

Adult Women's PAG Care

THE WCPAG GLOBAL HUB

GLOBAL PAG EMPOWERMENT:

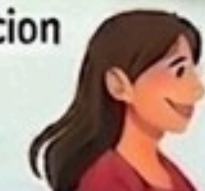
Research, Education, and Seamless Transition



Holistic Support



Empowerment &
Education



Smooth Transition



Reproductive Health
and Rights



Fertility Preservation
Innovation



Global Wellness
& PAG Advocacy

A GLOBAL COMMITMENT

...pangan ay hindi i
...ng takot kundi a
...ang sumulong sa
...to ay ang kakayah
...uloy sa harap ng m
...sak at hamon. Ito
...hang magpatuloy k
...ogreso ay nagiging
...ap. Ito ay ang kaka
...lihing nakataas ang
...t ang iyong mga mata
...minimithing premyo.
...kakayahang hindi sumu

...ang nagsabi na magiging
...lali ito. May mga pagk
...justo mong sumuko,
...a hamon ay tila napa
...sag ang mga had!
...di malalam
...suko"



NINOY AQUINO INTERNATIONAL AIRPORT (NAIA)

It serves as the Philippines's primary gateway and has recently achieved record passenger volumes, handling over 50 million passenger volumes, handling over 50 million passengers in 2024. It is undergoing rehabilitation and is transforming into a modern hub. It has been recognized as one of the best airports for layover food and ranking 7 with 131 dining options and offering highly affordable airport lounges.



Ang
ka
k
t

na
na
mga
kapag
lindi man
surun
tila napa
had

FROM NAIA



NAIA Location



NAIA has 4 distinct terminals.

Direct Transit to Metro Manila



\$- One-way (various lines)



Airport Shuttle Service

Approx. time 30-50 min.
(varies by terminal and line)

Intra-Metro Transit Metro Manila Mass Transit



LRT (Light Rail (varies))



P13-P28 (varies)

METRO MANILA



Private & App Rides

UBE Express



Premium Bus

P300.00 one way
Approx. time 30-60 min.

METRO MANILA



Grab

P350-P500
GrabCar



P400-P550
Taxi

PUV



Bus



Jeepney



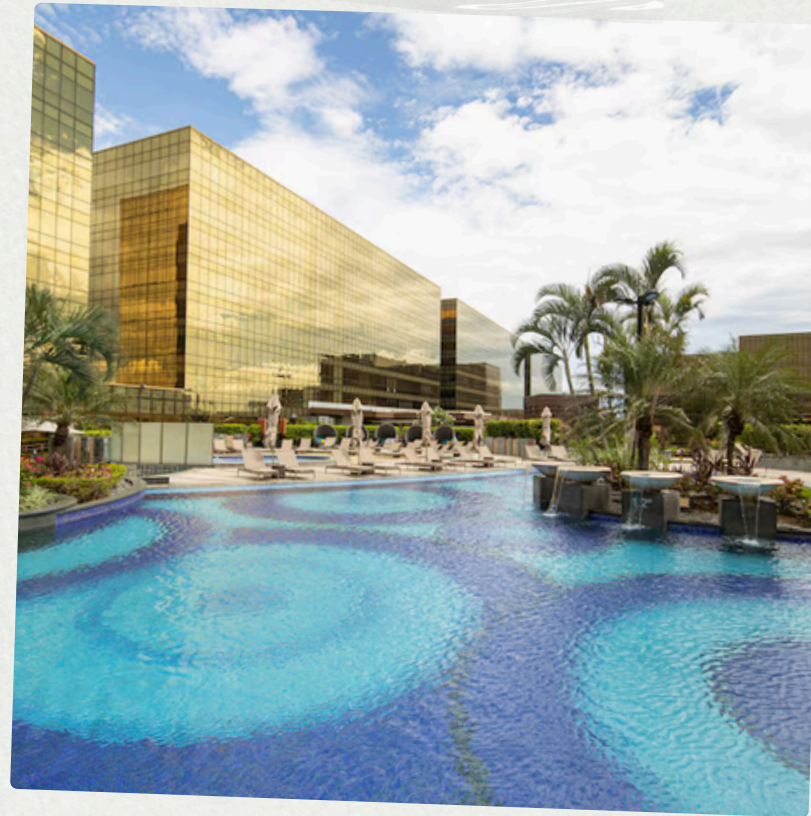
Tricycle

*Prices and times are estimates and subject to change.

METRO MANILA HOSTING OPTIONS



MANILA HOTEL
(MANILA)



CITY OF DREAMS
(PARAÑAQUE)



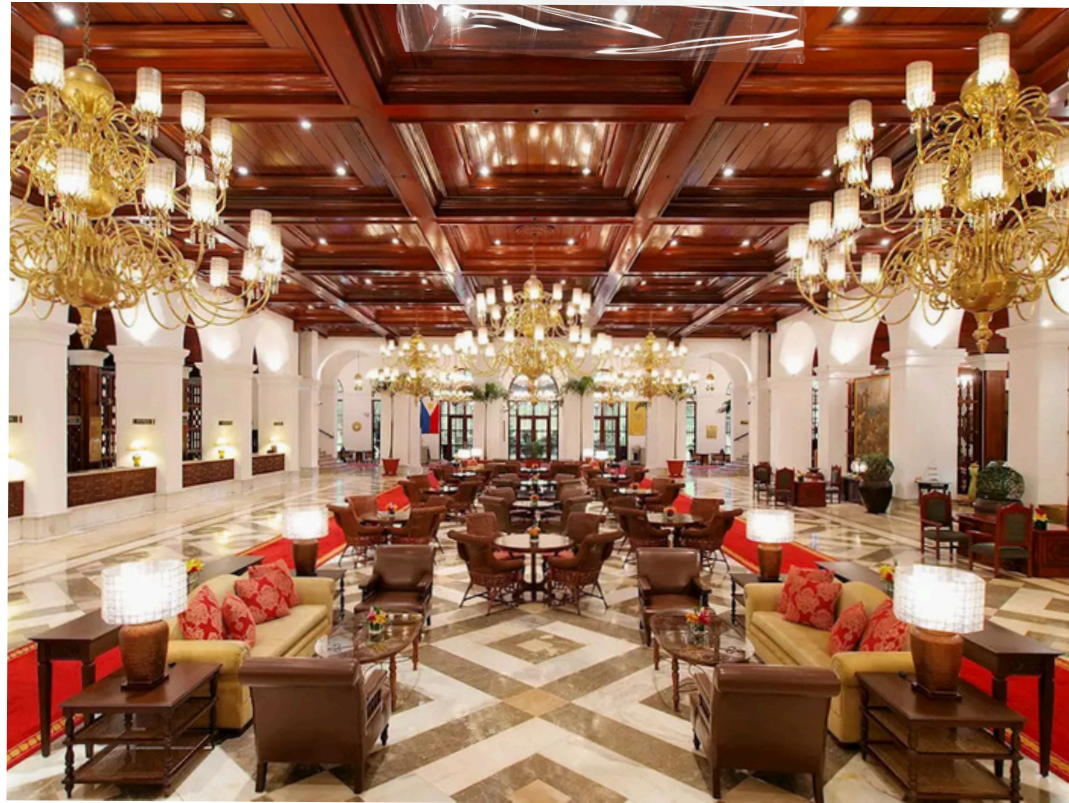
CONRAD MANILA
(PASAY)



MANILA MARRIOTT
HOTEL
(PASAY)



METRO MANILA HOSTING OPTIONS



MANILA HOTEL
(MANILA)



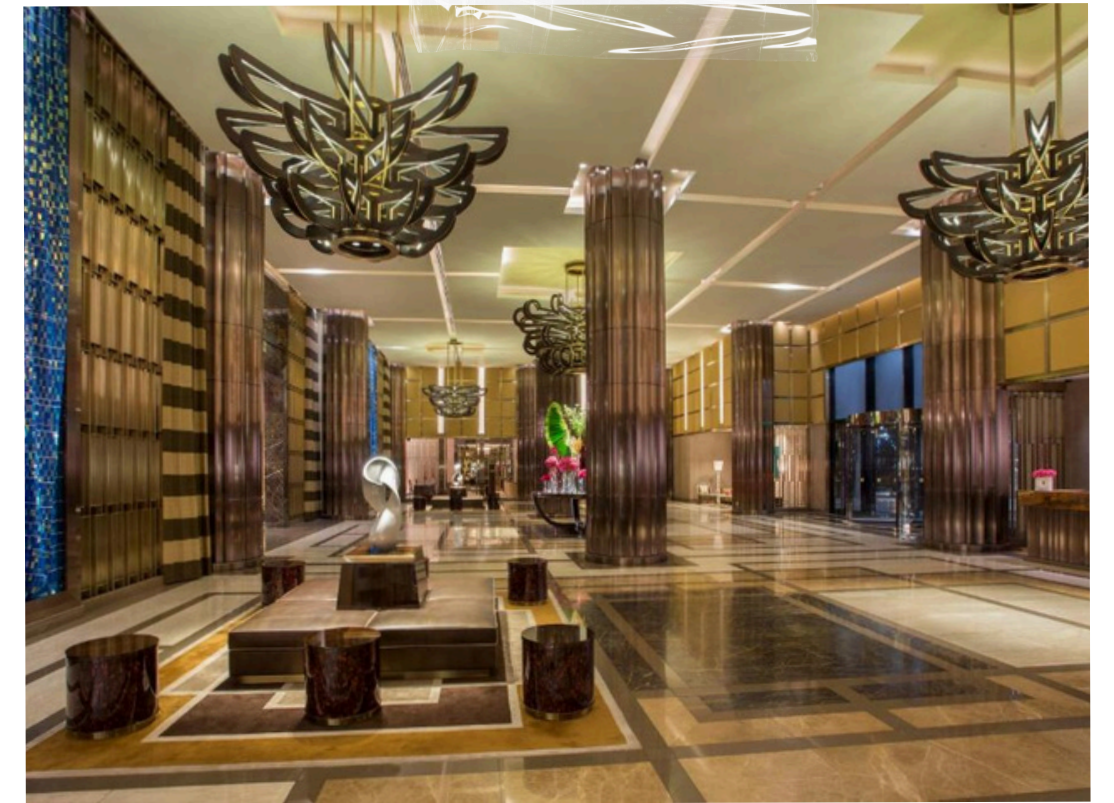
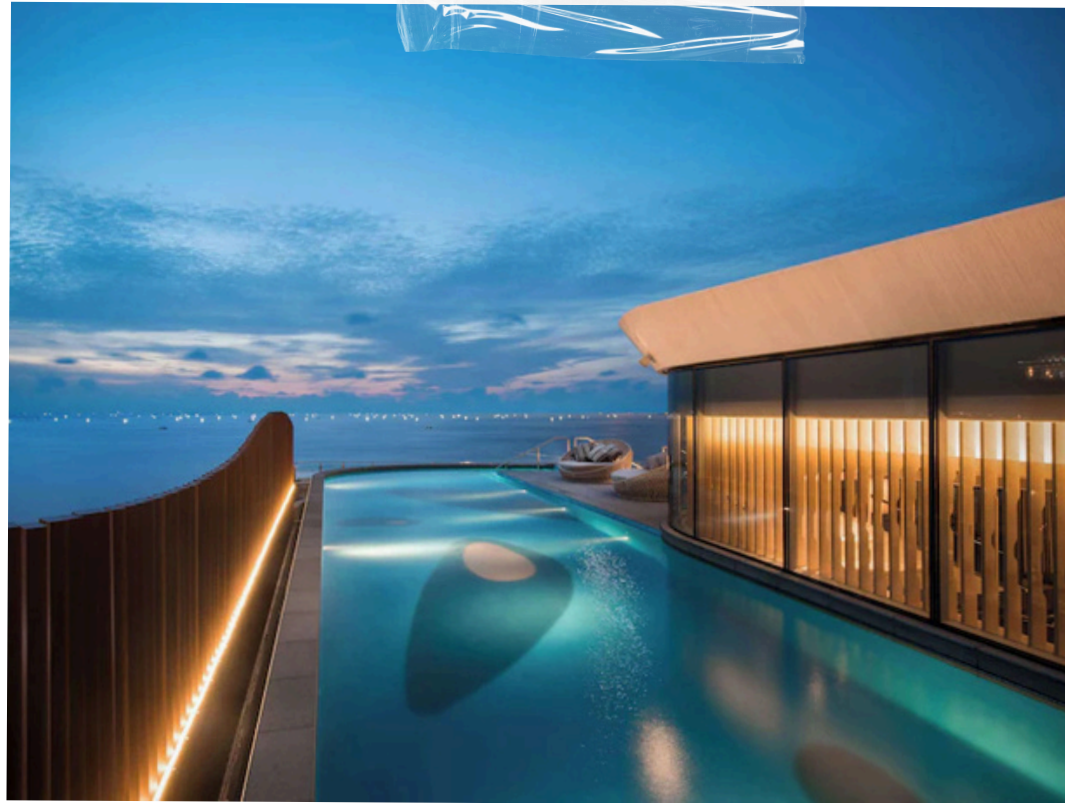
METRO MANILA HOSTING OPTIONS



CITY OF DREAMS
(PARAÑAQUE)



METRO MANILA HOSTING OPTIONS



CONRAD MANILA
(PASAY)



METRO MANILA HOSTING OPTIONS



MANILA MARRIOTT HOTEL
(PASAY)



MANILA

Manila is a captivating blend of Spanish colonial history, modern entertainment hubs, and massive seaside complexes.



PASAY

Pasay City is a major entertainment and commercial hub in Metro Manila, known for its massive shopping complexes, world-class theaters, and vibrant bayfront attractions.



PARAÑAQUE

Parañaque City has evolved from a historic trading hub into a major center for world-class entertainment, spiritual devotion, and ecological preservation.



INTRAMUROS

It is the oldest district and the historic core of Manila. Built by the Spanish in the late 16th century, its massive stone walls and fortifications once protected the city from foreign invasions.



FORT SANTIAGO

A citadel that served as a military headquarters and a prison, most famously holding the national hero José Rizal before his execution.



SAN AGUSTIN CHURCH

A UNESCO World Heritage site and the oldest stone church in the Philippines, known for its incredible trompe l'oeil ceilings.



MANILA CATHEDRAL

The seat of the Roman Catholic Archdiocese of Manila, an architectural marvel with a long history of being destroyed and rebuilt.

yan ay hindi a
takot kundi a
sumulong sa
ay ang kakayah
sa harap ng n
at hamon. Ito
y magpatuloy k
aso ay nagiging
Ito ay ang kaka
ng nakatass ang
iyong mga mata
limiting, premyo-
yakang hindi sumi
nagsabi na magigin
ito. May mga pagh
o mong suhuko,
mon ay tala napa
had

RIZAL PARK

Also known as **Luneta**, is a 58-hectare urban park that serves as a symbolic heart for the Filipino people. It is the site where the country's independence was proclaimed in 1946.



RIZAL MONUMENT

Guarded by sentries 24/7, this bronze-and-granite monument contains the remains of José Rizal.



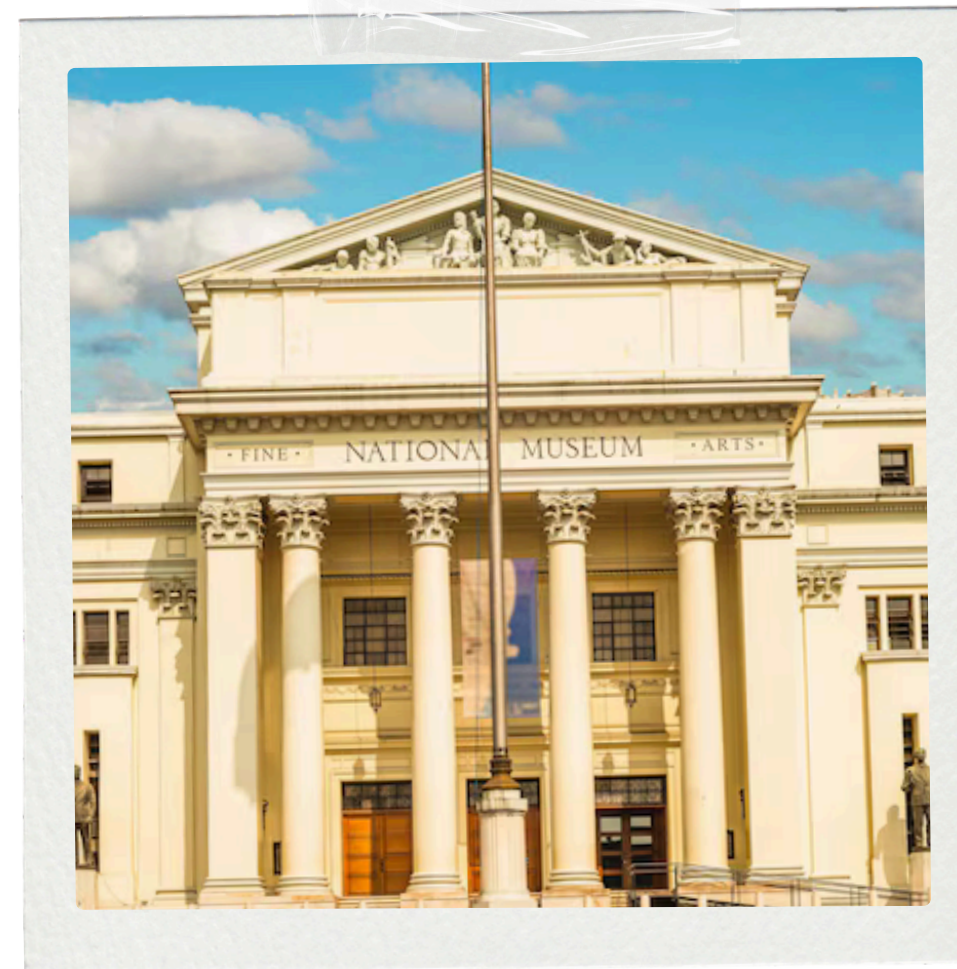
MUSICAL DANCING FOUNTAIN

A popular evening attraction that features choreographed water shows set to lights and music.

CULTURAL AND CIVIC CENTERS



NATIONAL MUSEUM
OF **ANTHROPOLOGY**



NATIONAL MUSEUM
OF **FINE ARTS**



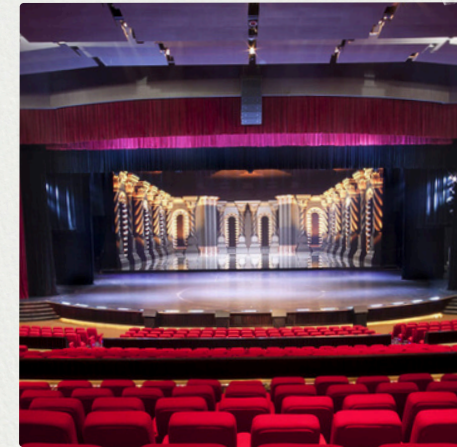
NATIONAL MUSEUM
OF **NATURAL HISTORY**

CULTURAL AND CIVIC CENTERS

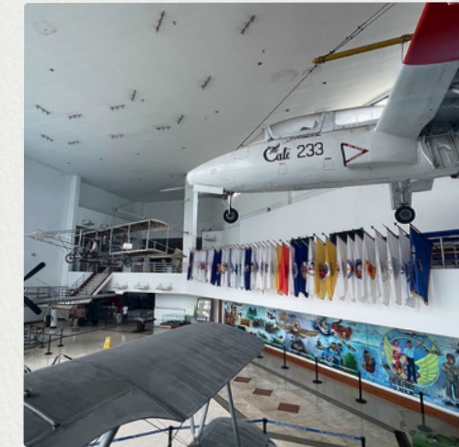


CULTURAL CENTER OF THE PHILIPPINES (CCP)

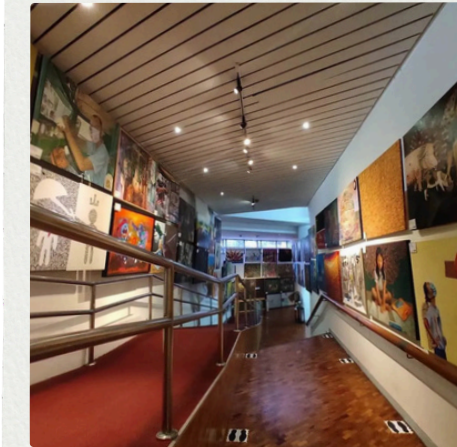
It is the country's national center for the performing arts, designed by National Artist Leandro Locsin.



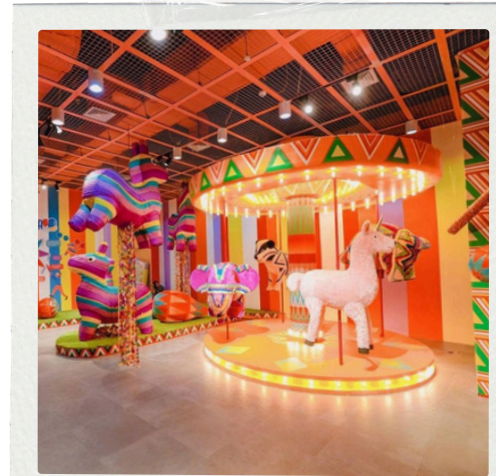
NEWPORT PERFORMING ARTS THEATER



PHILIPPINE AIR FORCE AEROSPACE MUSEUM



MUSEO NG SINING, GSIS



THE DESERT MUSEUM

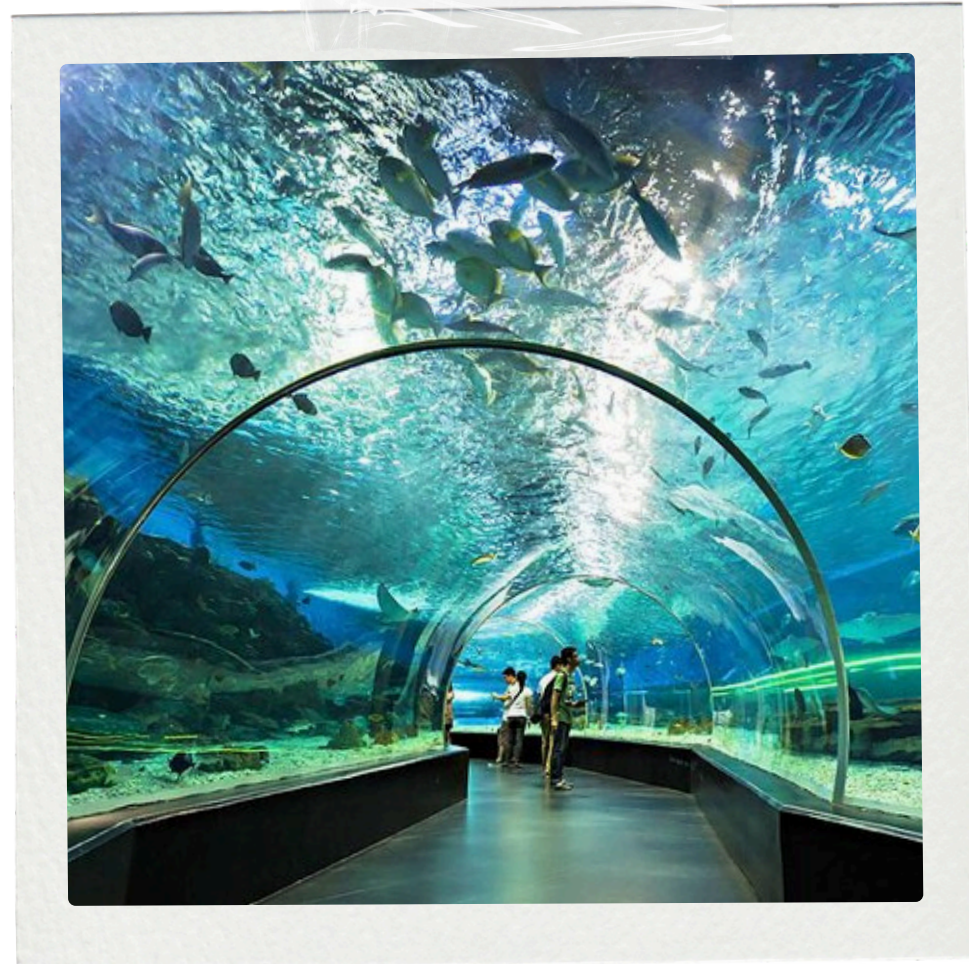


SPACE & TIME CUBE+



LAKBAY MUSEO

FAMILY AND LEISURE



MANILA OCEAN PARK



MANILA ZOO



BINONDO

at
maniwal
igong mga
Kailangang magi
nuko. Dapat handa ka
gusto mo. At higit sa lahat
sa igong sarili. Pagdating sa
ay, walang mga shortcut. Mang
ming pagsisikap at dedikasyon, ngun
nda kang magsikap, makakamit mo
mo. Tandaan lamang

ATTRACTIONS



SM MALL OF ASIA



NEWPORT WORLD RESORTS

yan ay hindi i
takot kundi a
sumulong sa
ay ang kakayah
sa harap ng m
at hamon. Ito
y magpatuloy k
aso ay nagiging
Ito ay ang kaka
ng nakataas ang
iyong mga mata
imithing, premyo-
yakang hindi sumi
nagsabi na magigin
ito. May mga pagh
o mong suhuko,
mon ay tila napa
had.

WORLD-CLASS ENTERTAINMENT AND GAMING



OKADA MANILA



CITY OF DREAMS
MANILA



SOLAIRE RESORT

HERITAGE



PALACIO DE MEMORIA

yan ay hindi i
takot kundi a
sumulong sa
ay ang kakayah
sa harap ng m
at hamon. Ito
y magpatuloy k
aso ay nagiging
Ito ay ang kaka
ng nakataas ang
iyong mga mata
limiting, premyo.
yakang hindi sumi
nagsabi na magigin
ito. May mga pagh
o mong suhuko,
mon ay tala napa
had.



...ng maging? ... ayunin at ambisyon? Anong ...
... naintindihan mo na kung ano ang gusto mo, simu ...
... ng ilagay sa mga salita. Isulat ang iyong panan ...
... ng buhay at sumangguni dito nona ...
... ahonan ang iyong sarili kung ...
... akit ito mahalaga

DISTINGUISHED EATS



THE MANILA HOTEL'S CAFÉ
ILANG-ILANG & THE LOBBY LOUNGE



ILLUSTRADO RESTAURANT



BARBARA'S HERITAGE
RESTAURANTS



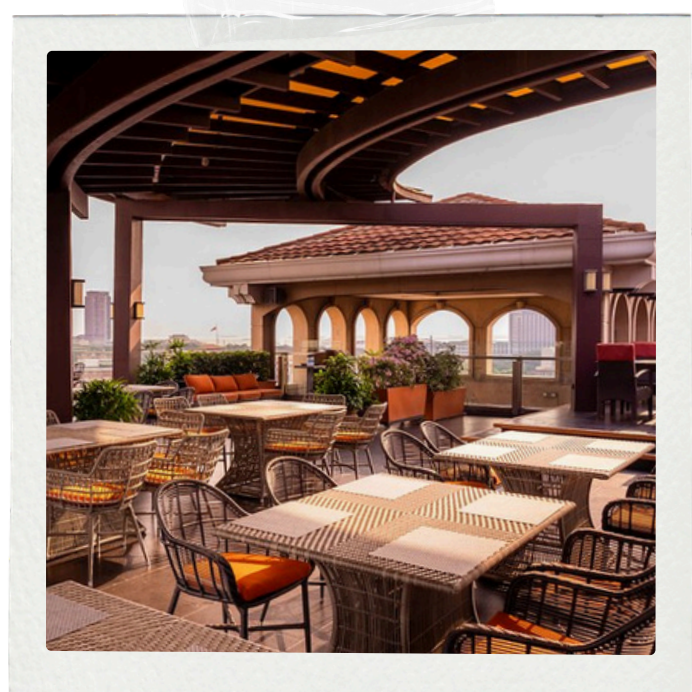
HARBOR VIEW RESTAURANT



THE ARISTOCRAT RESTAURANT



BINONDO'S TO HO
PANCITERIA ANTIGUA



THE BAYLEAF INTRAMUROS'
9 SPOONS & SKY DECK



MANILA'S DISTINGUISHED COFFEE PLACES



LA CATHEDRAL CAFÉ



BELFRY CAFÉ



CAFÉ ADRIATICO



1919 GRAND CAFÉ

yan ay hindi
takot kundi a
sumulong sa
ay ang kaka
sa harap ng m
at hamon. Ito
y magpatuloy k
eso ay nagiging
Ito ay ang kaka
ng nakatass ang
iyong mga mata
limiting, premyo-
yakang hindi sumi
nagsabi na magigin
ito. May mga pagh
o mong suhuko,
mon ay tila napa
had

SIGNATURE DINING IN ENTERTAINMENT CITY



FINESTRA | SOLAIRE
RESORT ENTERTAINMENT



GINZA NAGAOKA

at
maniwal
igong mga
Kailangang magi
nuko. Dapat handa ka
gusto mo. At higit sa lahat
sa igong sarili. Pagdating sa
ag, walang mga shortcut. Mang
ming pagsisikap at dedikasyon, ngun
nda kang magsikap, makakamit mo
mo. Tandaan lamana!



PHILIPPINE ISLANDS

With over 7,600 islands, the Philippines is a destination that reveals its best secrets only to those who stay long enough to venture beyond the typical tourist circuit.

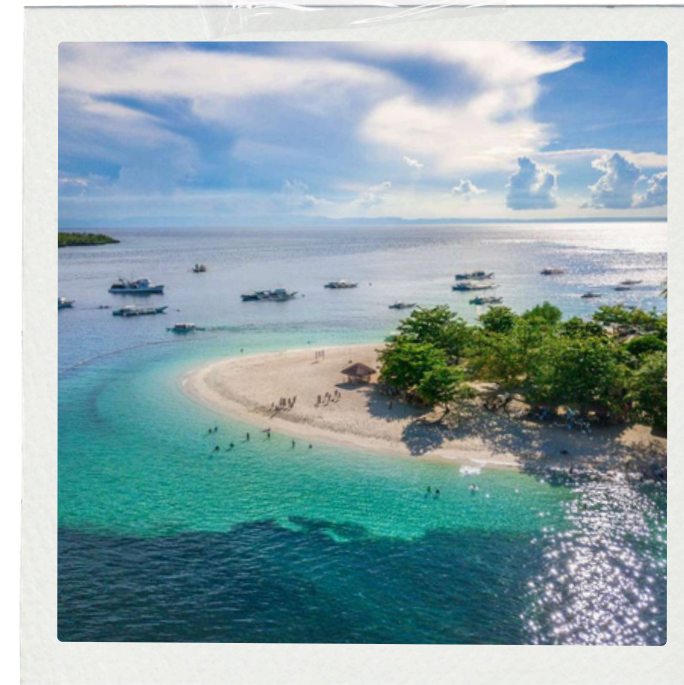
THE "ISLAND-HOPPING" NEVER ENDS



PALAWAN



BORACAY



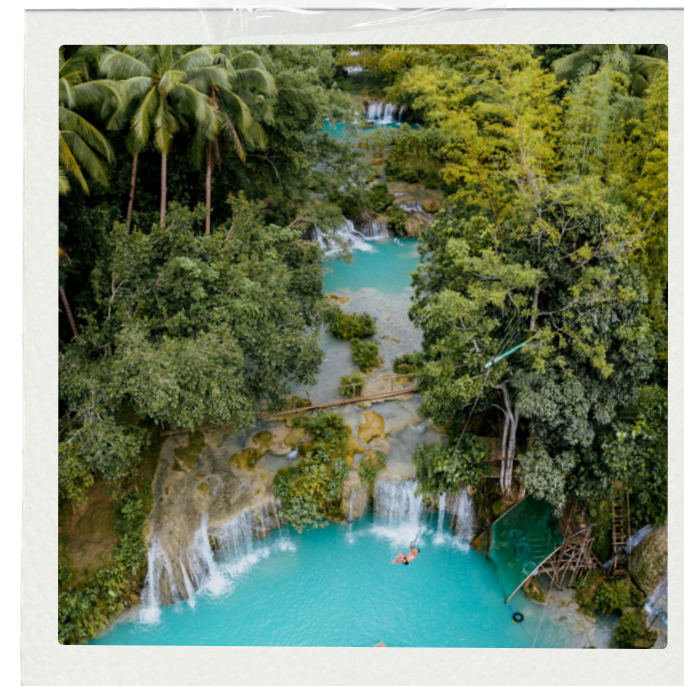
CEBU



SIARGAO



CAMIGUIN



SIQUIJOR

ig m
agumpas
ngtuon at determ
in, at ito ang tum
andas kapag ang mga b
ha ang di

WORLD-CLASS DIVING AND MARINE BIODIVERSITY



TUBBATAHA REEFS



MALAPASCUA



MOALBOAL



OFF-THE-BEATEN-PATH ADVENTURES



BANAUE & BATAD



BATANES



CATANDUANES

at
maniwa
izong mga
Kailangang mag
nuko. Dapat handa k
gusto mo. At higit sa la
sa izong sarili. Pagdating sa
ng walang mga shortcut. Man
ming pagsisikap at dedikasyon
nda kang magsikap
mo. Fai

THANK YOU!

**MARITES M. BUTARAN, MD, FPOGS, FIFEPAG
PRESIDENT**

PAGSPHIL2019@GMAIL.COM

AD HOC COMMITTEE

CHAIR:

MA. SOCORRO C. BERNARDINO, MD, FPOGS, FIFEPAG

CO-CHAIR:

ANGELA S. AGUILAR, MD, FPOGS, FPSGE, FIFEPAG

MEMBERS:

RYAN B. CAPITULO, MD, FPOGS, FIFEPAG
CATHERINE C. DONATO, MD, FPOGS, FIFEPAG
MARITES M. BUTARAN, MD, FPOGS, FIFEPAG

